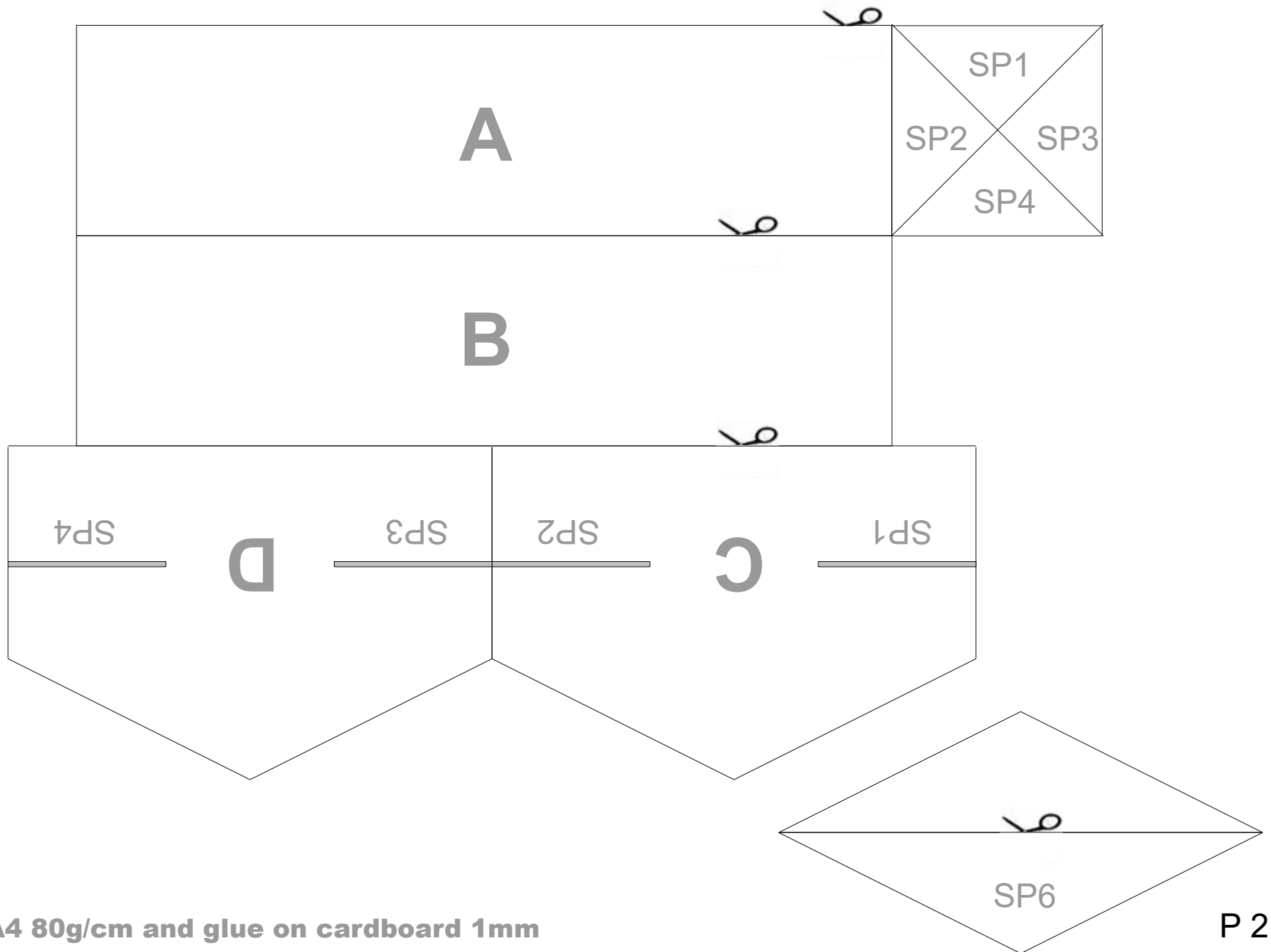


M16

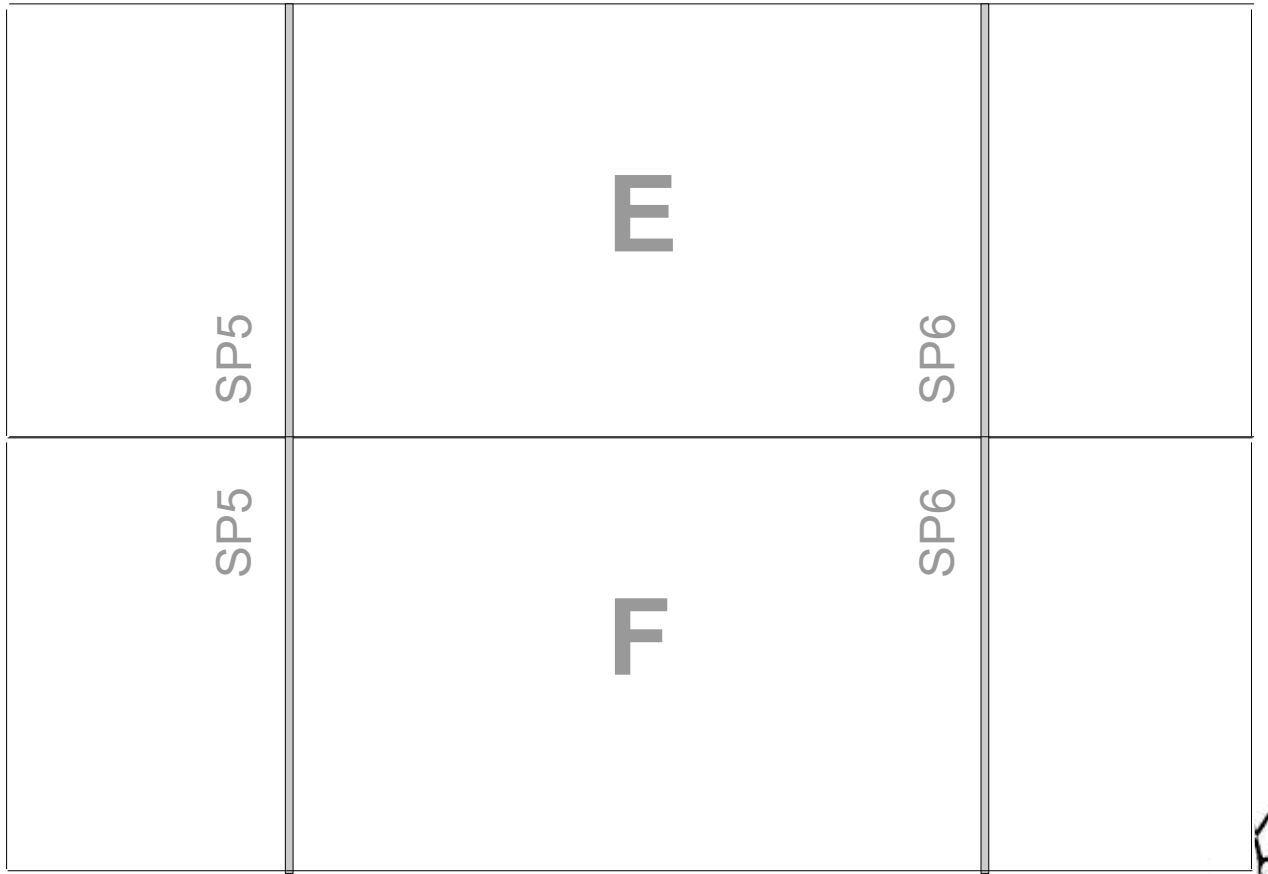
village school

© cardboards.image4mail.nl





Print on A4 80g/cm and glue on cardboard 1mm



H	H
H	H

G

Print on A4 80g/cm and glue on cardboard 1mm

**Print on A4 80g/cm and glue on the
cardboard part G**



glue on part A



glue on part B

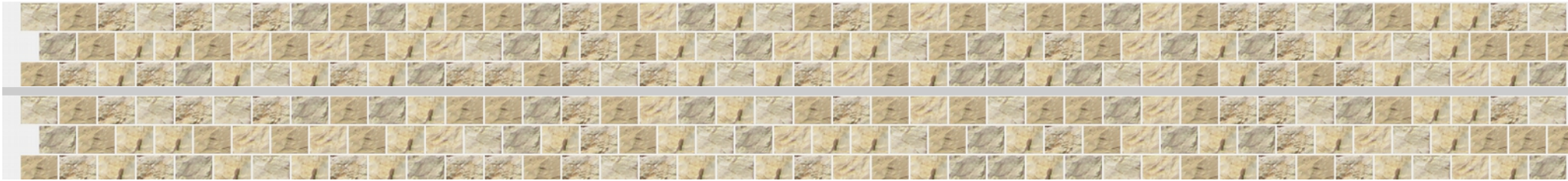


glue on part C



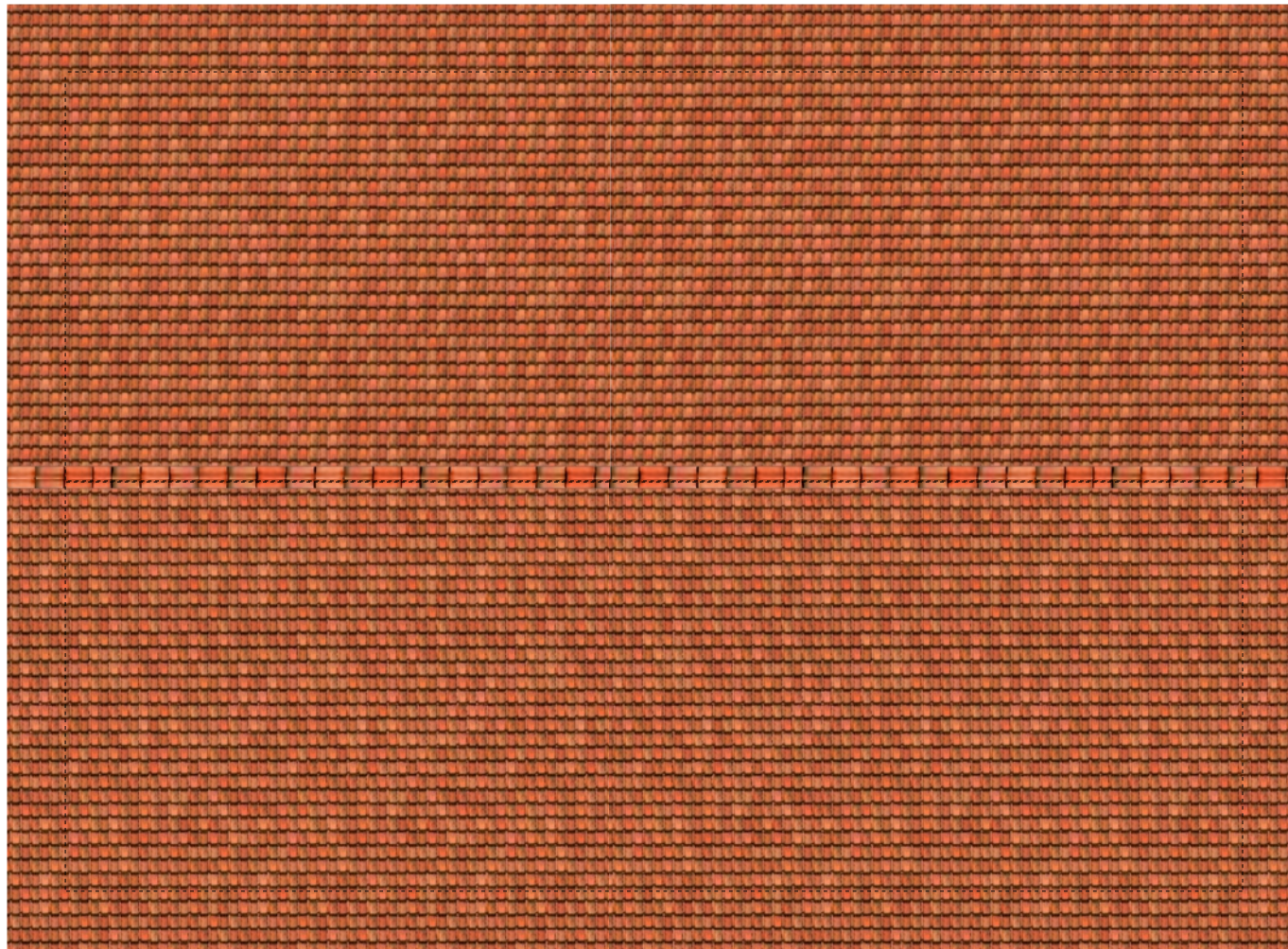
glue on part D

Print on A4 80g/cm and glue on the cardboard parts



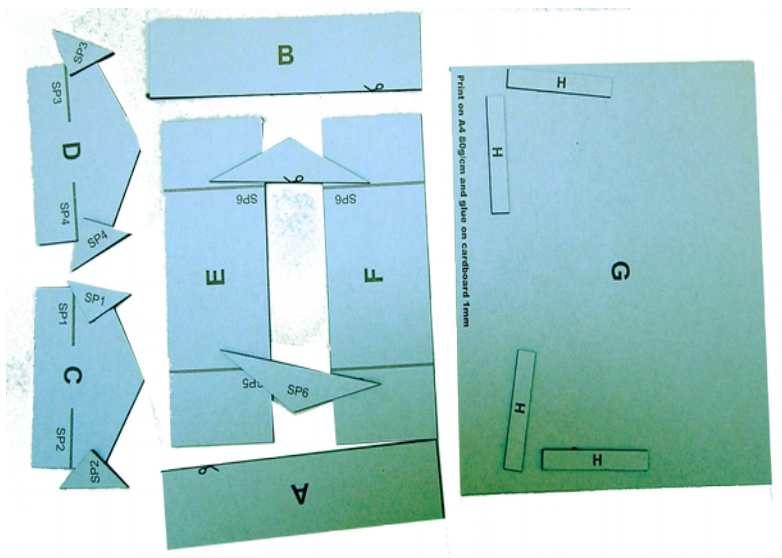
glue on parts H



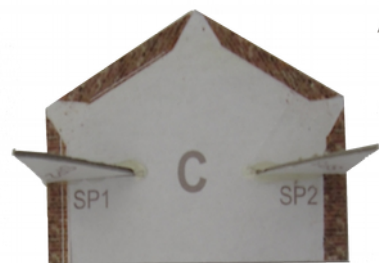
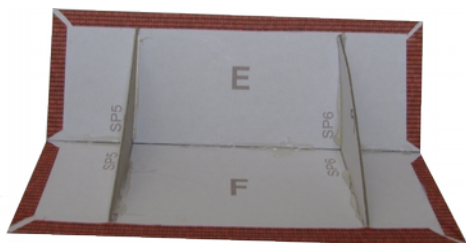


glue on part E-F ▲





1) Print page 2,3,5 on A4 80g/cm and glue on cardboard 1mm and cut out the parts.
 2) Cut out the parts of page 6,7 and glue them on the parts from 1.



3) Glue parts sp on C and D.

Take A Brake

And glue all the other parts together.

